

intelligentdesign

Copyright Intelligent Design Associates Limited 2012

intelligentdesign

Wood for sustainable furniture – challenge vs. opportunity

Chris Thorpe IDeAssociates - Autumn 2012

Copyright Intelligent Design Associates Limited 2012

Wood - living, organic and human



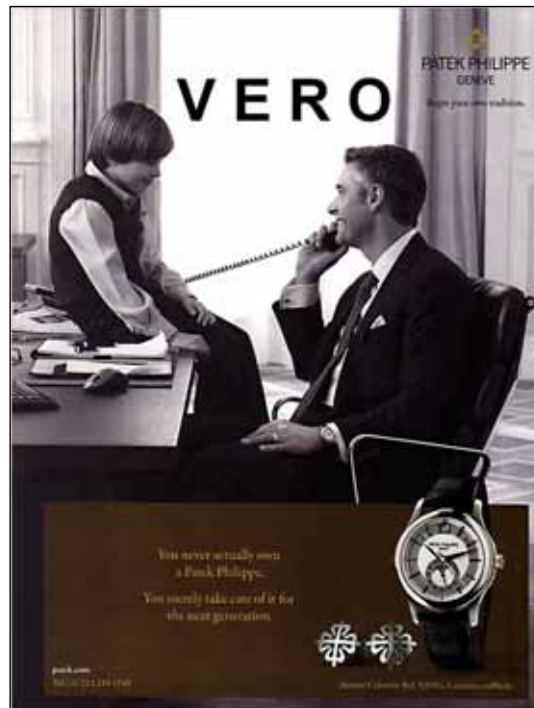
Ref: Barbara Hepworth – two forms with white
Copyright Intelligent Design Associates Limited 2012

Ages gracefully and connects us through history



Ref:<http://ignatius-mabasa.blogspot.co.uk/2011/01/interview-with-chair.html#/2011/01/interview-with-chair.html>
Copyright Intelligent Design Associates Limited 2012

“You merely take care of it for the next generation”



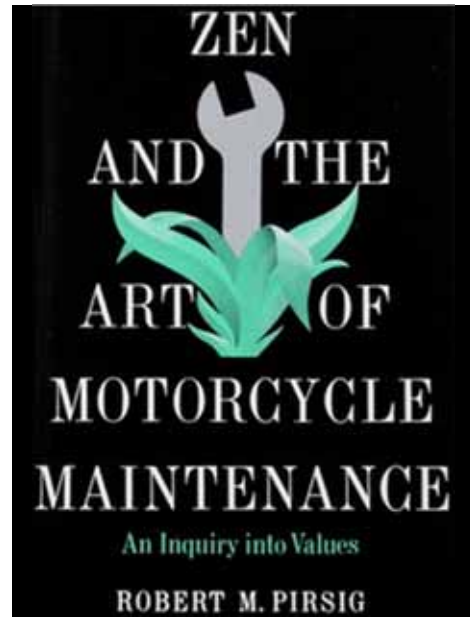
Ref: <http://patekwatch.blogspot.co.uk/2011/05/patek-philippe-ad-reference-5205g.html>
Copyright Intelligent Design Associates Limited 2012

*“Natural cowhide leather tanned with plant extracts;
ages over time to a rich patina”*



Ref: <http://myfashionpassion.com/2005/03/louis-vuitton-nomade-ipod-case-285.html>
Copyright Intelligent Design Associates Limited 2012

(provides) Empathy through making and using



Ref:http://en.wikipedia.org/wiki/Zen_and_the_Art_of_Motorcycle_Maintenance
Copyright Intelligent Design Associates Limited 2012

Supreme structural versatility



Ref:Tonet steam bent bicycle prototype <http://www.dezeen.com/2012/10/06/thonet-concept-bike-by-andy-martin-studio-for-thonet/>
Copyright Intelligent Design Associates Limited 2012

Is it wood and is it sustainable?



Ref: <http://www.shelterpop.com/2009/07/21/faux-bois-a-faux-pas/>
Copyright Intelligent Design Associates Limited 2012

'Certified' (soft and hard) wood



Ref: <http://www.fsc-watch.org/>
Copyright Intelligent Design Associates Limited 2012

Recycled wood (£2.00 per foot)



Ref:<http://www.woodrecycling.org.uk/sales.html>
<http://www.communitywoodrecycling.org.uk/>
Copyright Intelligent Design Associates Limited 2012

Bamboo and other 'non-woods'



Ref:<http://alexasigno.co.uk/bamboo-scaffolding/>
Copyright Intelligent Design Associates Limited 2012

Liquid wood – a 21st century wood polymer



Ref:<http://www.tecnaro.de/english/arboform.htm?section=arboform>
Copyright Intelligent Design Associates Limited 2012

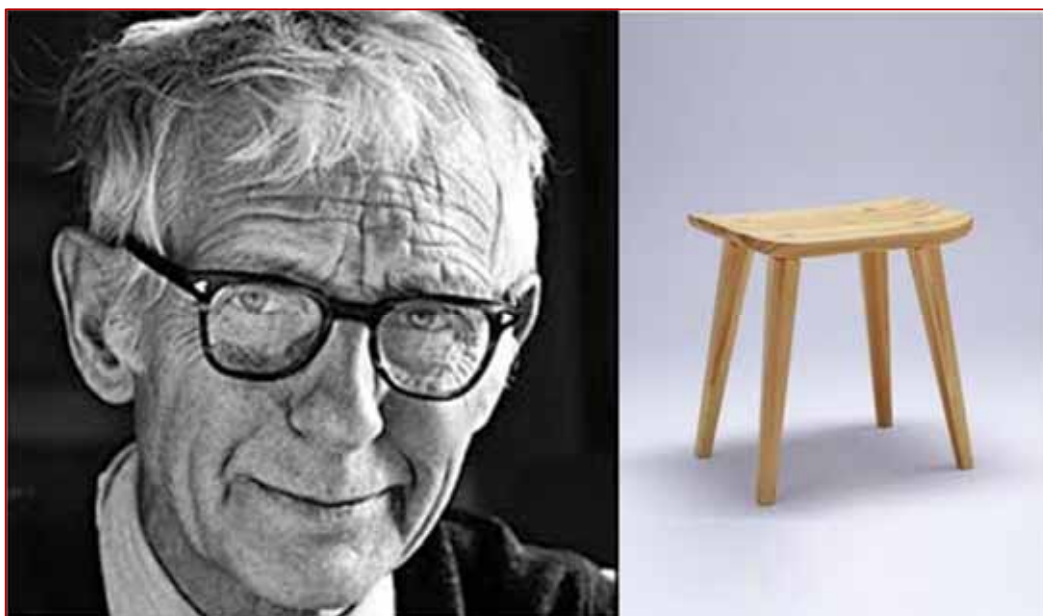
The sustainability challenge

The challenge of production



Ref: <http://www.hermanmiller.com/products/seating/side-chairs/mattiazzi-branca-chair.html>
Copyright Intelligent Design Associates Limited 2012

Alternative = 'Crafts as a model for industry'



Ref: <http://www.docstoc.com/docs/121991534/Craft-Futures-Paper>
<http://alltestulet.blogg.se/2010/march/>

Copyright Intelligent Design Associates Limited 2012

Coppice – the ultimate sustainable wood source?



Copyright Intelligent Design Associates Limited 2012

A sustainable system = material, design and production



Ref:<http://www.davidcolwell.com/>

Copyright Intelligent Design Associates Limited 2012

intelligentdesign