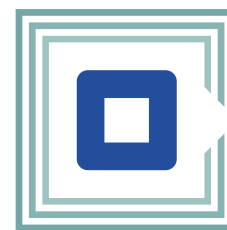


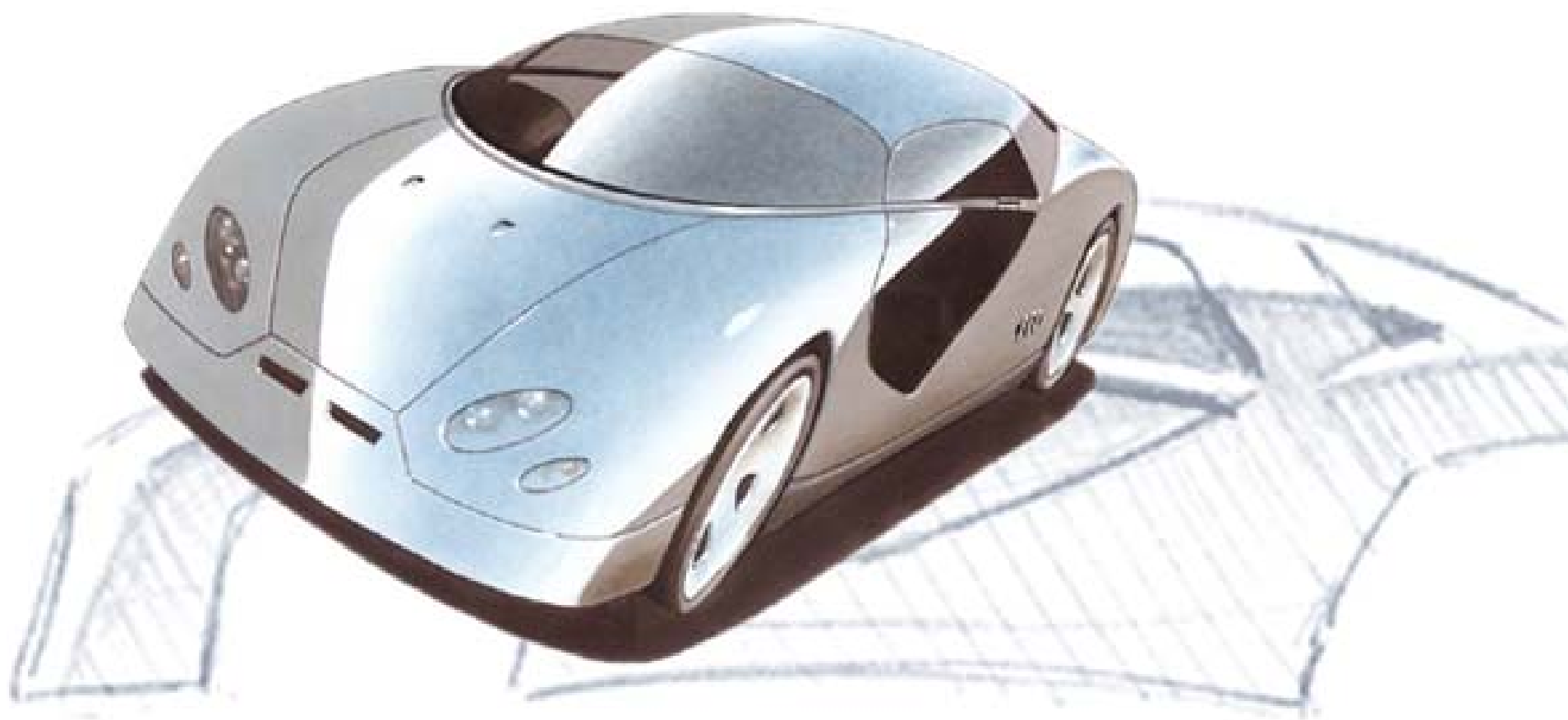
# BIG

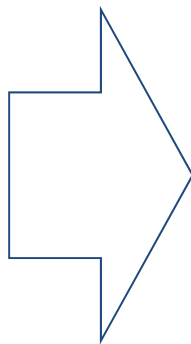
Ben Peace, Sustainability Lead  
@BenPeace



**KTN**

the  
Knowledge Transfer  
Network

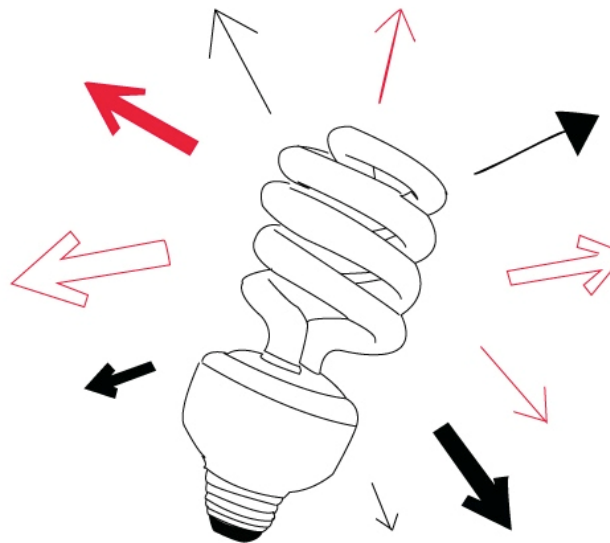




Intelligent Energy

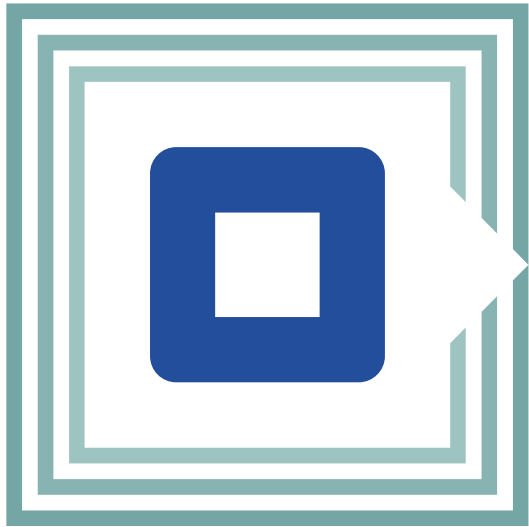


**BAXI**



## Northwest Eco-Innovation Programme



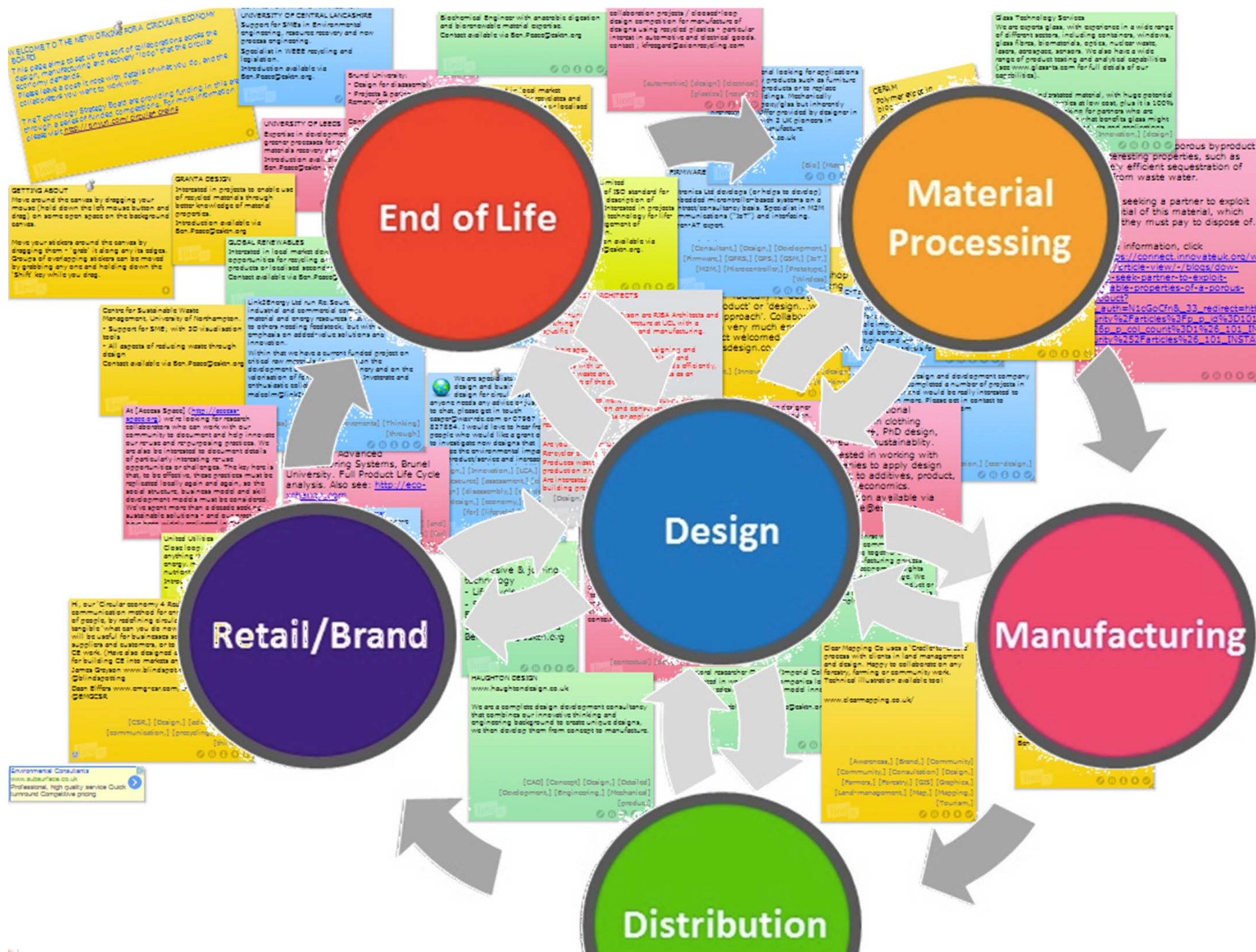


**KTN**

the  
**Knowledge Transfer  
Network**

**Innovate UK**





# CONNECTED LIGHT BULB

- Detachable core sent in the mail
- Consumer Lighting As A Service
- Lease costs < energy savings



---

**The Agency of Design**



# PHILIPS



national union of **students**



# Resource Efficient Business models programme



3½ year, €3.1m programme looking to enable resource efficient business models:

- Extending product lifetime
- Hire/leasing
- Buy-back
- Products as services

[www.rebus.eu.com](http://www.rebus.eu.com)  
[@rebuslife](https://twitter.com/rebuslife)



[APPLY AS DESIGNER](#)

[HOW IT WORKS?](#)

[BLOG](#)

Festival Republic

BETA

Rentk's Love

# LIVE FASHION, DON'T OWN IT

Peer-to-Peer and Designers **Fashion Rental marketplace.**

[SIGN UP](#)

[LOG IN](#)

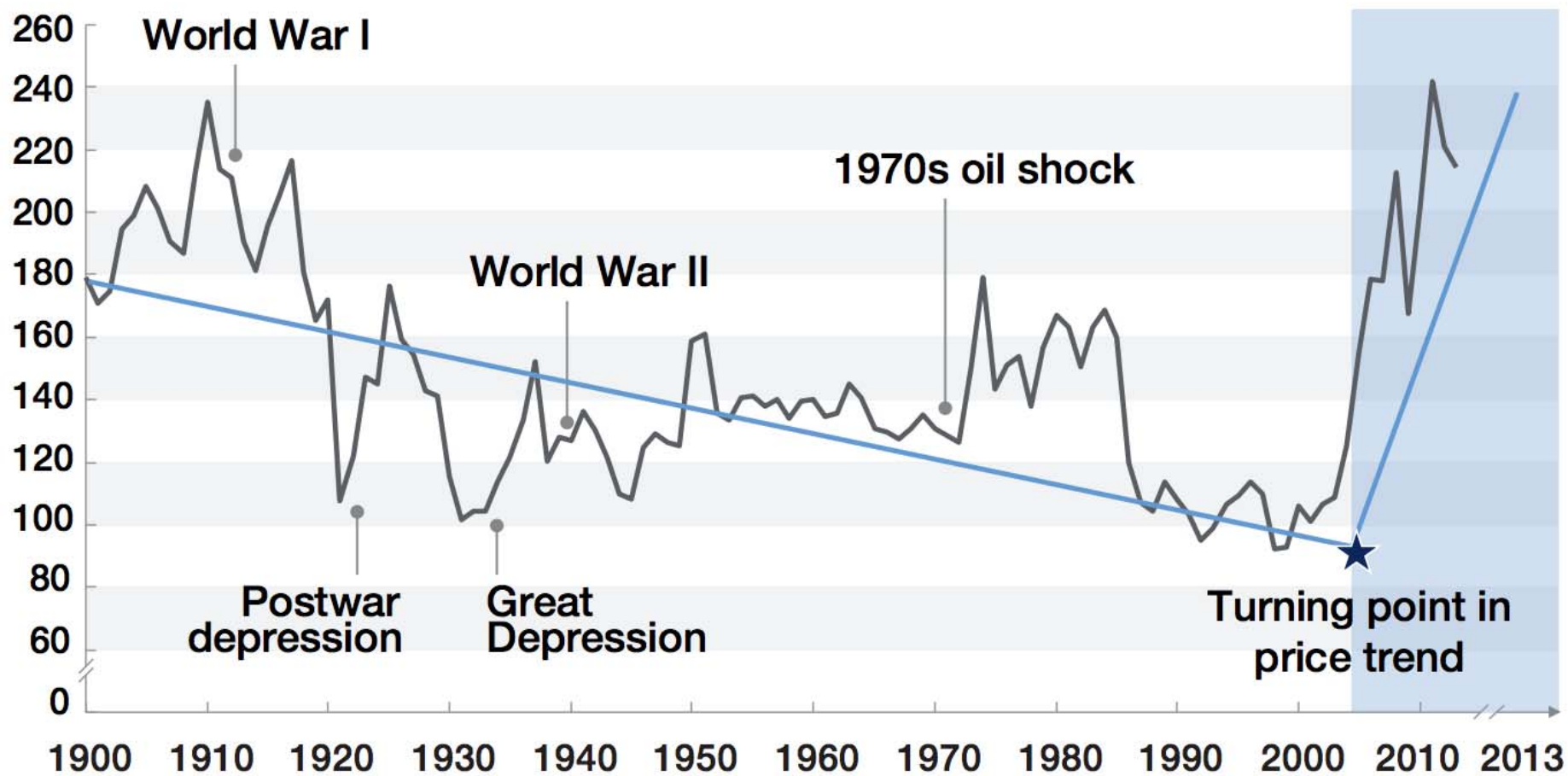
[SUBSCRIBE TO OUR NEWSLETTER.](#)

[CONTACT US](#)





Image: McKinsey Commodity Price Index – based on food, agricultural, metals & energy







A close-up photograph of a fast-food meal consisting of a hamburger and french fries. A silver stethoscope is placed on the food, with its chest piece resting on the sesame seed bun of the burger and its tubing looping over the fries. The background is a plain white surface.

The single biggest factor affecting the economic performance of our city....

....is the diet of our citizens





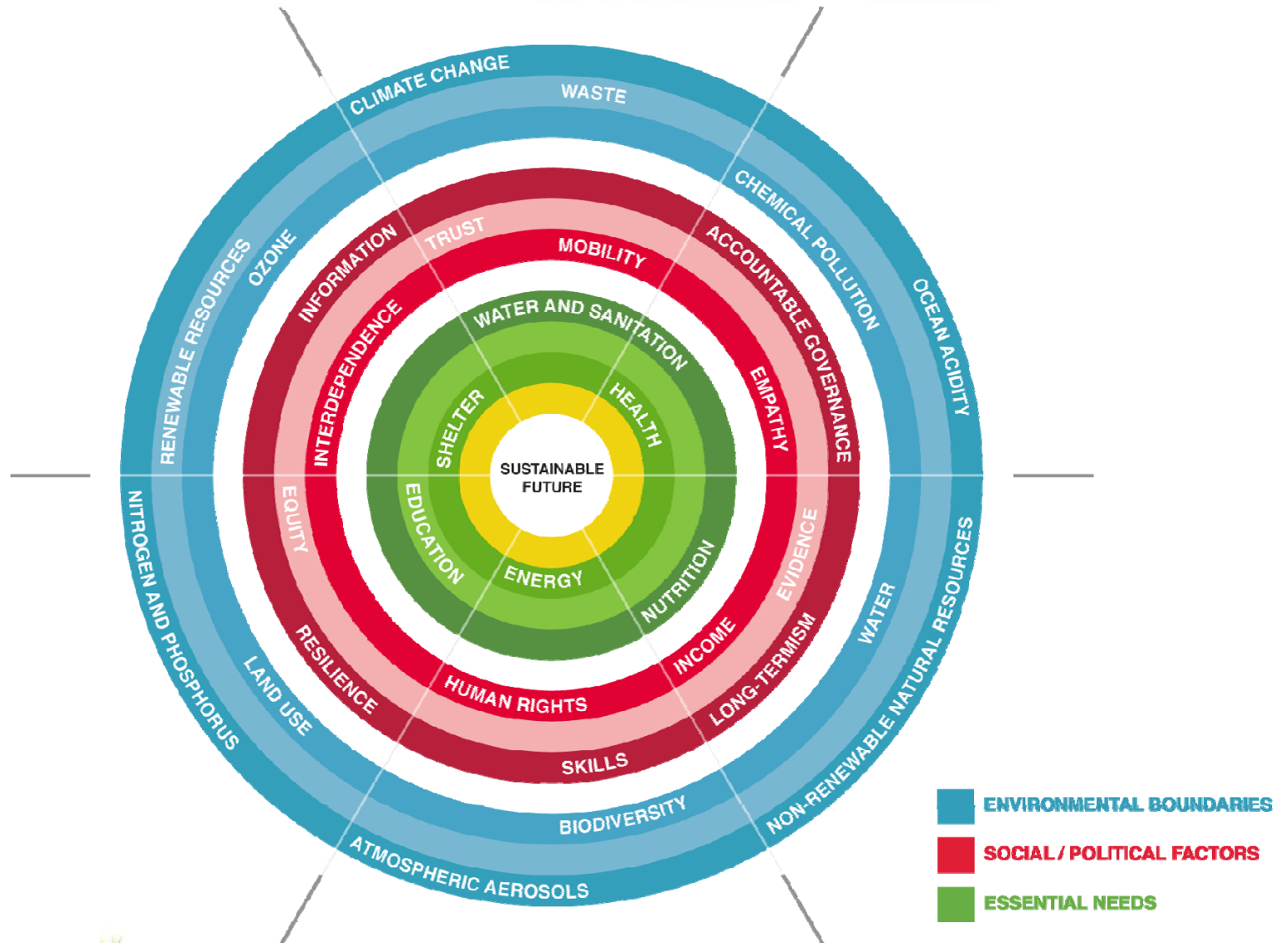
2008: >50%

2050: ~70%





Innovate UK



I often try to avoid talking  
about “sustainability”

The background of the slide features a dark blue gradient with faint, glowing circuit-like lines and several square frames containing pixelated, glowing patterns, resembling digital data or network nodes.

ben.peace@ktn-  
uk.org

@BenPeace

@KTNUK