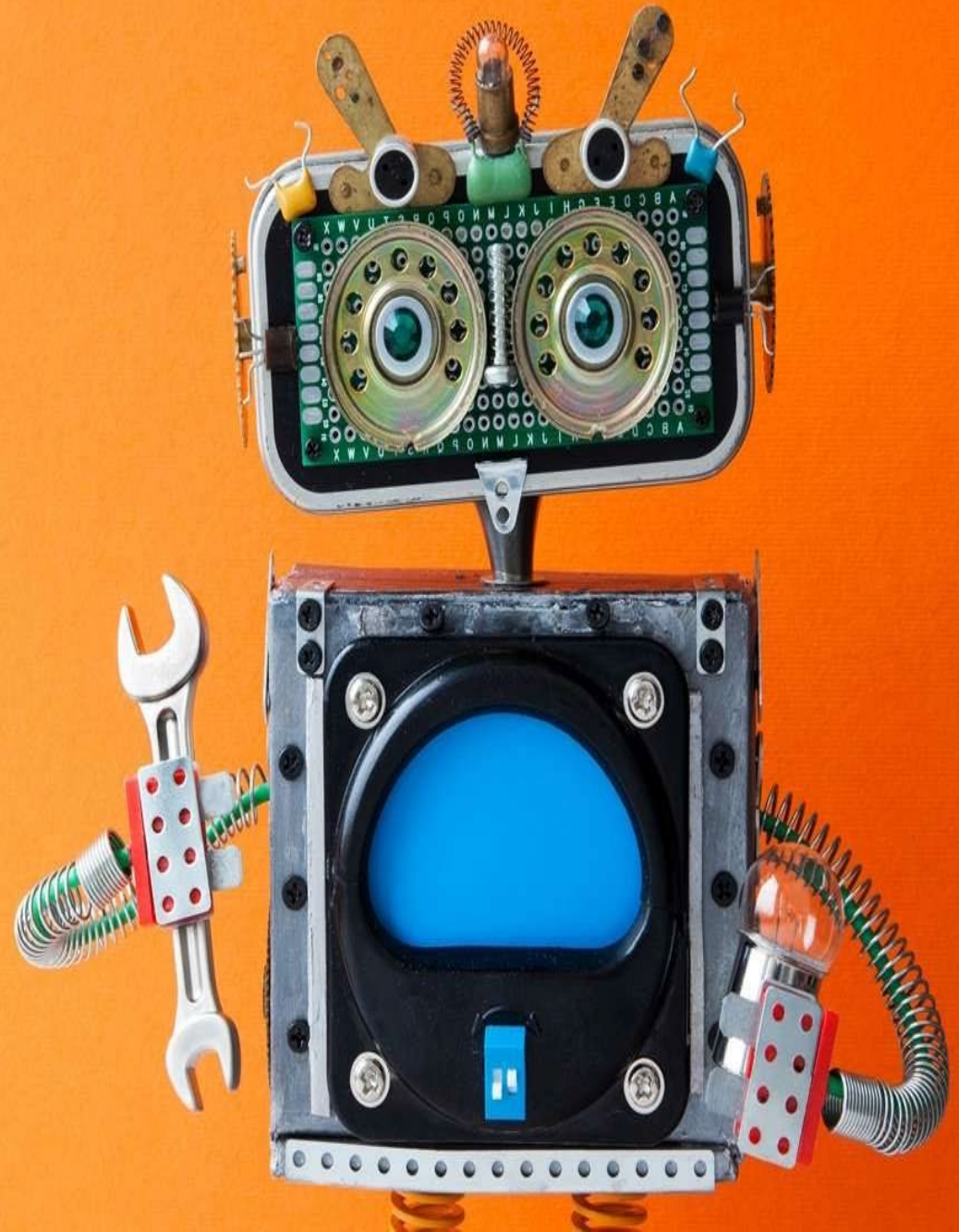


Repair Cafés
2nd UK Conference
9th June 2023
UCA
Farnham



Strategic Overview

Repair Cafes

2nd UK Conference

9th June 2023

UCA

Professor Martin Charter FRSA

Director, The Centre for Sustainable Design[®]

University for the Creative Arts (UCA)

Founder & Chair, Board of Trustees, Farnham Repair Cafe

Fellow, Clean Growth Leadership Network

1 NO POVERTY



2 ZERO HUNGER



3 GOOD HEALTH AND WELL-BEING



4 QUALITY EDUCATION



5 GENDER EQUALITY




6 CLEAN WATER AND SANITATION



7 AFFORDABLE AND CLEAN ENERGY



8 DECENT WORK AND ECONOMIC GROWTH



9 INDUSTRY, INNOVATION AND INFRASTRUCTURE



10 REDUCED INEQUALITIES



11 SUSTAINABLE CITIES AND COMMUNITIES



THE GLOBAL GOALS
For Sustainable Development

12 RESPONSIBLE CONSUMPTION AND PRODUCTION



13 CLIMATE ACTION



14 LIFE BELOW WATER



15 LIFE ON LAND



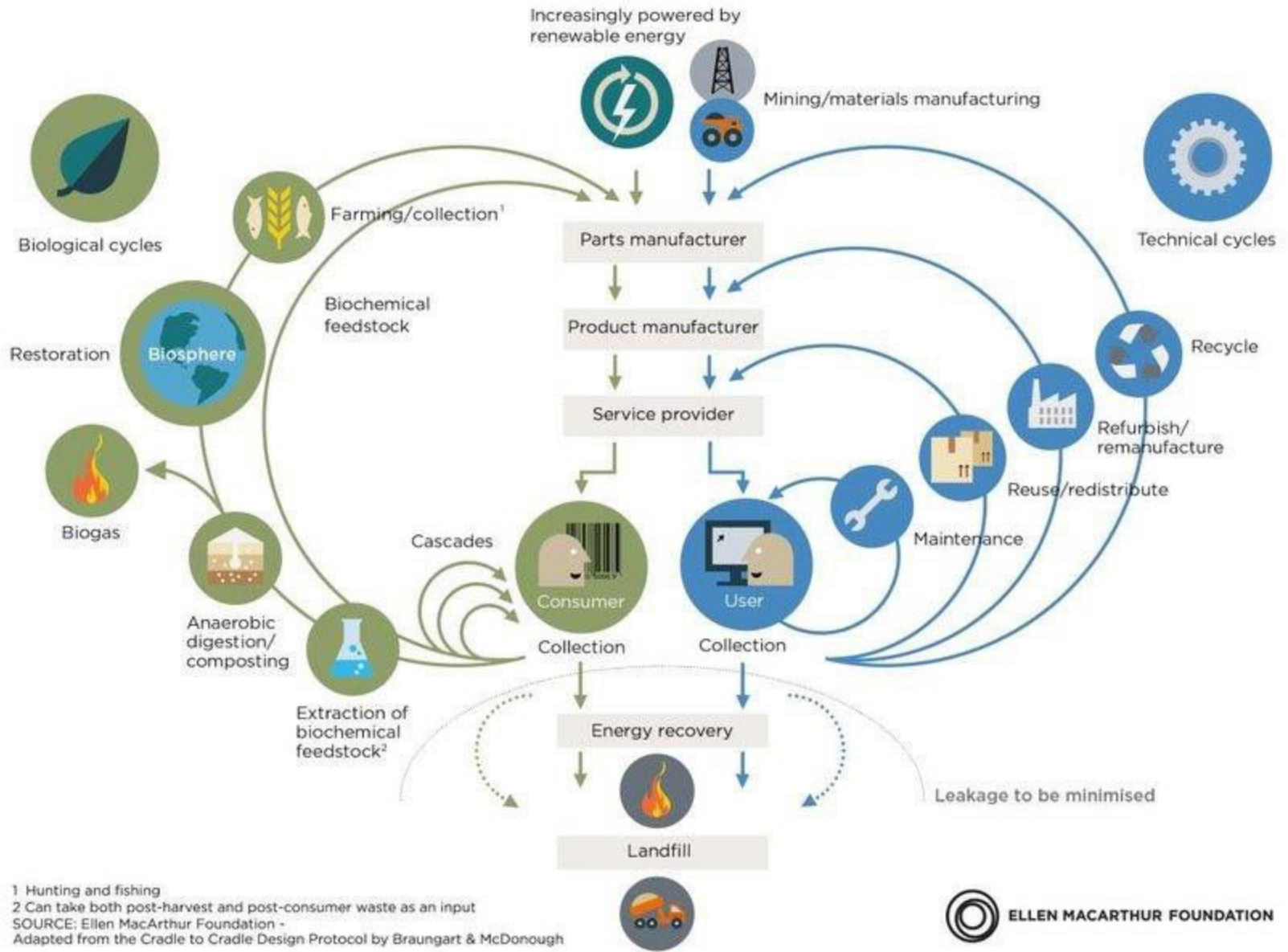
16 PEACE AND JUSTICE STRONG INSTITUTIONS

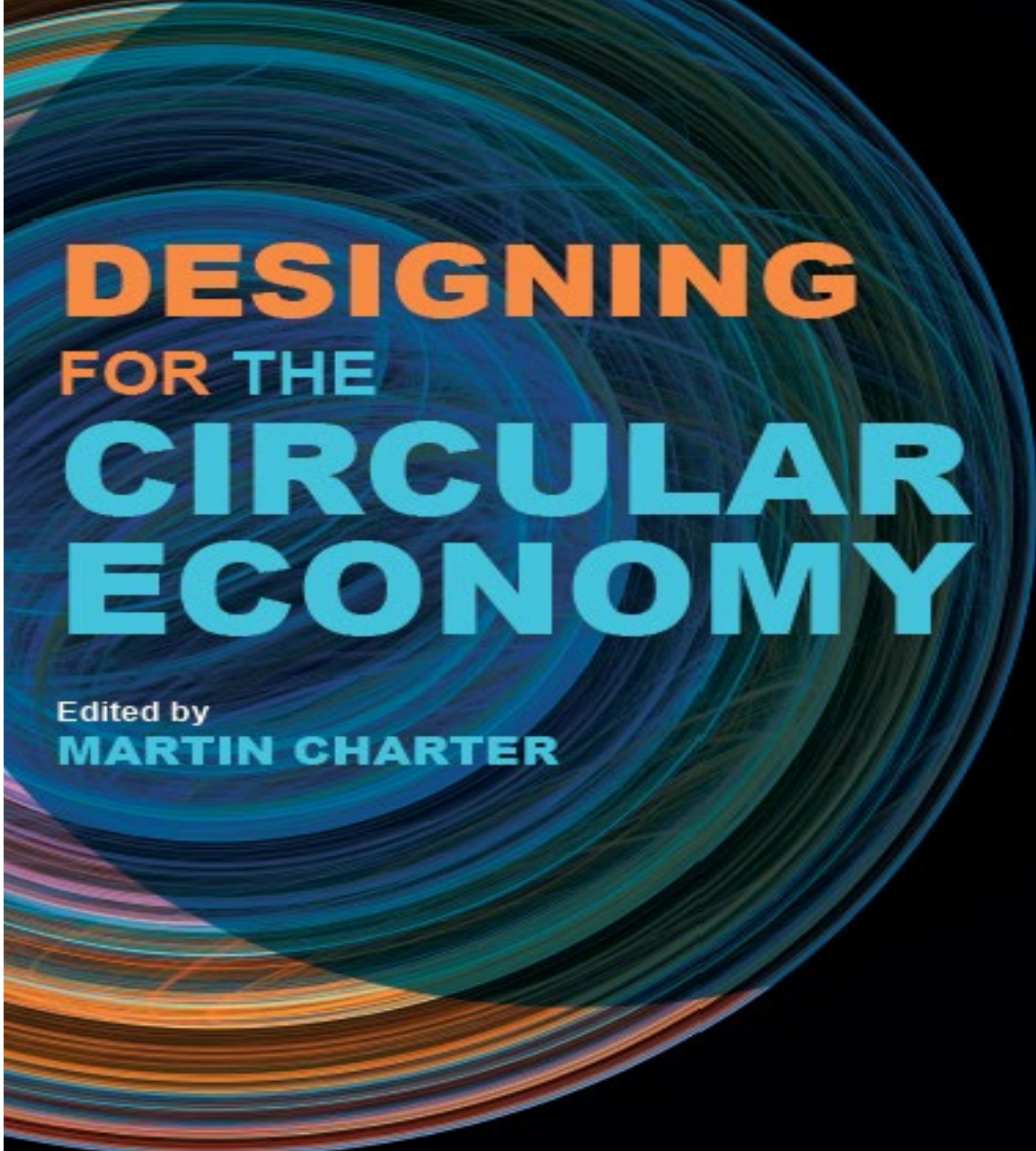


17 PARTNERSHIPS FOR THE GOALS



CIRCULAR ECONOMY - an industrial system that is restorative by design





DESIGNING
FOR THE
CIRCULAR
ECONOMY

Edited by
MARTIN CHARTER

WASTE



VALUE

10Rs

Levels of circularity: 10 R's

Order of priority

High



Refuse: prevent the use of raw materials

Reduce: decrease the use of raw materials

Redesign: renew product with a view to circularity principles

Reuse: use product again (as second-hand)

Repair: maintain and repair product

Refurbish: revive product

Remanufacture: make new from second-hand product

Re-purpose: reuse product but with another function

Recycle: salvage material streams with highest possible values

Recover: incinerate waste with energy recovery

Low

Source: Cramer, J. 2017. The Raw Materials Transition in the Amsterdam Metropolitan Area: Added Value for the Economy, Well-Being and the Environment, Environment.



**RIGHT
- TO -
REPAIR**



Llywodraeth Cymru
Welsh Government

◀ [Back to recruitment](#)

» [Login or Register](#)

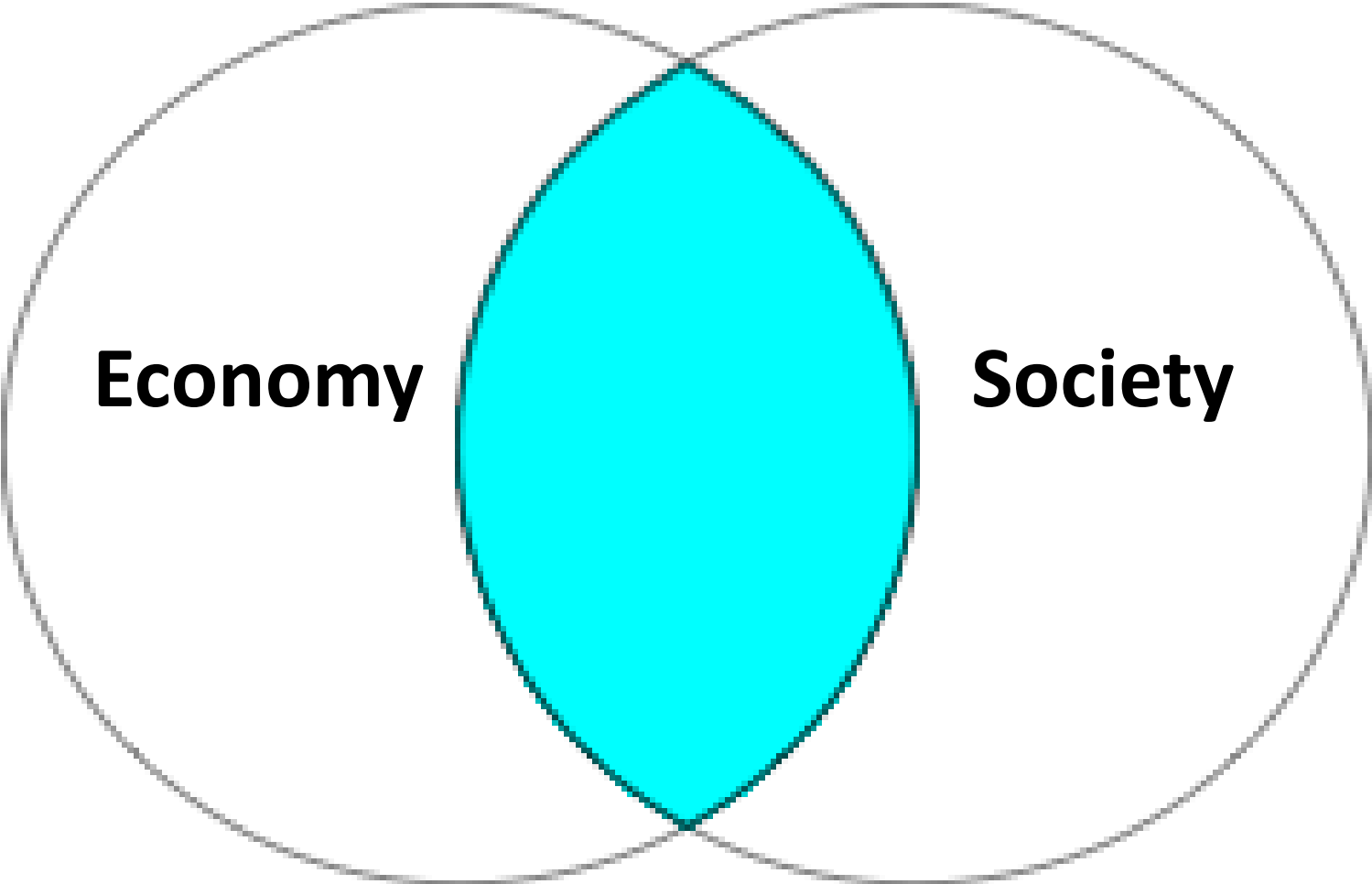


Vacancy -- Repair and Re-use - Policy Lead

Working for the Civil Service

The Welsh Government's recruitment processes are underpinned by the principle of selection for appointment on merit on the basis of fair and open competition as outlined in the **Civil Service Commission's Recruitment Principles**.

Circular Economy: Society v Economy



Distribution of Repair Cafés Worldwide (Repair Café Foundation, June 2023)



Visit one of our 2752 Repair Cafés

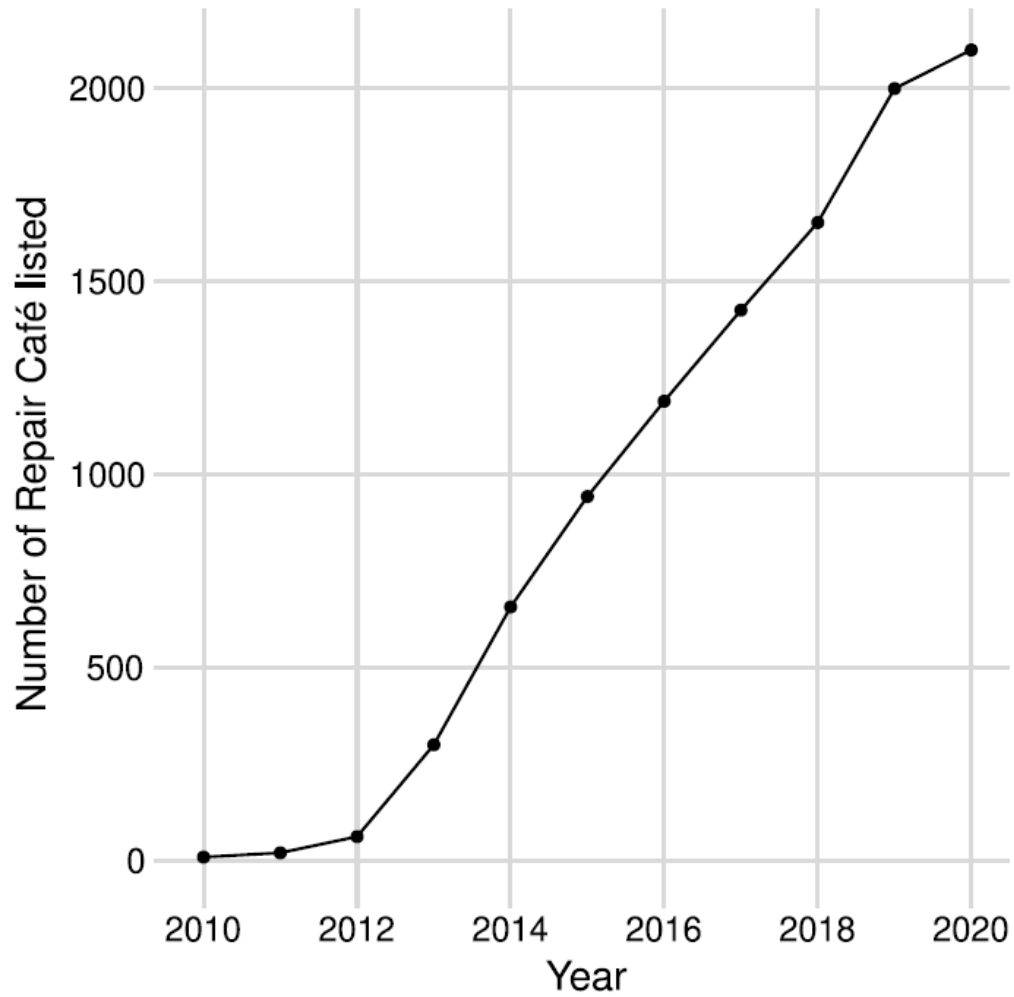


Fig. 2. Growth in number of Repair Cafés listed in the annual reports of the Repair Café (International) Foundation.

The Third Global Survey of Repair Cafés: A Summary of Findings

Dr. Wouter Spekkink (Erasmus University Rotterdam¹)

Dr. Malte Rödl (Sustainable Consumption Institute, University of Manchester)

Prof. Martin Charter (The Centre for Sustainable Design, Business School for the Creative Industries, University for the Creative Arts)



REPAIR CAFE

February 2020

¹At the time of the study, Wouter Spekkink was a Research Associate at the Sustainable Consumption Institute of the University of Manchester



Repair Cafés and Precious Plastic as translocal networks for the circular economy

Wouter Spekkink^{a,*}, Malte Rödl^{a,2}, Martin Charter^b

^a Sustainable Consumption Institute, University of Manchester, Oxford Rd, M13 9PL, Manchester, United Kingdom

^b Centre for Sustainable Design, College of Creative Arts at Farnham, Fallowers Road, Farnham, Surrey, GU9 7DS, UK

ARTICLE INFO

Handling Editor: Zhifu Mi

Keywords:

Circular economy
Translocal networks
Repair
Recycling
Citizen-driven initiatives

ABSTRACT

The literature on the circular economy is dominated by visions that either disregard the role of civil society in (transitions to) a circular economy or depict civil society actors merely as passive consumers. However, there are organized citizen initiatives that align with circular economy thinking and that envision a much more active role for civil society in (transitions to) the circular economy. This paper explores Repair Cafés and Precious Plastic as two examples of such initiatives based on exploratory questionnaire surveys conducted among the associated communities, supplemented with evidence from documents from the initiatives. Repair Cafés and Precious Plastic can be understood as translocal communities that strive toward creating a circular economy through, for example, local repairing and recycling of plastic waste. This article is the first to study translocal communities in the context of a circular economy. In theory, such communities can develop transformative potential to challenge, alter and/or replace dominant institutions. This requires them to develop a critical mass, a shared identity and a political voice. The study shows that networking (and thus the development of critical mass) occurs primarily in specific countries (in the case of Repair Cafés) and not necessarily community-wide (in the case of Precious Plastic). Evidence for a shared identity does exist in both communities, although more clearly in the case of Repair Cafés. The study does not provide evidence for an explicit political voice developing in either community, although in the case of Repair Cafés, the Repair Café International Foundation does take up lobbying activities. Thus, the ingredients for transformative potential in these communities are present only to a limited extent. This study contributes to the circular economy literature by showing how civil society actors can engage with (transitions to) the circular economy through organized citizen initiatives, a phenomenon that has thus far been largely neglected in the literature on circular economies. The study also adds to the limited pool of empirical knowledge on two rapidly growing citizen initiatives toward circular economies.

1. Introduction

In the past decade, the concept of circular economy (CE) has gained importance on the agendas of academics, policy-makers and businesses (Geisdoerfer et al., 2017; Ghisellini et al., 2016; Merli et al., 2018). Various definitions of CE exist in the literature.³ The definition adopted here is that of Geisdoerfer et al. (2017), who based their definition on a systematic review of the literature on CE: “a regenerative system in which resource input and waste, emission, and energy leakage are minimized by slowing, closing, and narrowing material and energy

loops. This can be achieved through long-lasting design, maintenance, repair, reuse, remanufacturing, refurbishing, and recycling” (p. 759). This definition highlights the philosophy that underlies the idea of CE, as well as the types of activities through which this philosophy can be put into practice.

In addition to debating the nature of the concept itself, the literature on CE has thus far focused primarily on how CE principles can, should be, or are applied in business and policy-making (Ziegler, 2019), with consumer perspectives being largely neglected in much of the literature (Kürchherr et al., 2017). In the rare mentions of consumers, they

* Corresponding author

E-mail addresses: spekkink@esb.eur.nl (W. Spekkink), malte.rodl@ehu.se (M. Rödl), mcharter@uca.ac.uk (M. Charter).

¹ Present address: Department of Public Administration and Sociology, Erasmus School of Social Sciences, Erasmus University Rotterdam, Postbus 1738, 3062 PA Rotterdam, the Netherlands.

² Present address: Department of Urban and Rural Development, Swedish University of Agricultural Sciences, Box 7012, Uppsala, Sweden.

³ For an overview of definitions: see, for example Prieto-Sandoval et al. (2018). For an analysis of definitions: see Kürchherr et al. (2017).

Conclusions:

- ▶ Survey: April – June 2019
- ▶ Respondents: 303 (exc Belgium)
- ▶ Shared purpose and identity
- ▶ Waste prevention
- ▶ Environment + social goals
- ▶ Meet monthly, public buildings
- ▶ Volunteers: 4-20
- ▶ Visitors/customers: 10-30
- ▶ Concentration in Europe
- ▶ Act as a *translocal communit(ies)*
- ▶ Uneven development of critical mass.
- ▶ Not radical, highly practical.
- ▶ Little evidence of political voice
- ▶ RCIF policy activities in Europe.

Country (total respondents)	Member of national network	Member of regional network	Contributes to organization of national meetings	Contributes to organization of regional meetings
<i>Germany (84)</i>	29%	38%	6%	21%
<i>The Netherlands (72)</i>	49%	17%	6%	11%
<i>France (59)</i>	31%	29%	2%	14%
<i>Great Britain (24)</i>	0%	38%	0%	13%
<i>United States (22)</i>	0%	27%	5%	18%
<i>Canada (16)</i>	0%	13%	0%	0%
<i>Australia (11)</i>	35%	64%	0%	9%

Table 4. Indicators of levels of national and regional organization per country (only countries with at least 5 Repair Cafés).

Importance to your Repair Café: responses on specific issues from highest to lowest (1 to 10) n = 63

Rank	Topic	Average
1	Social Value/Community/Behavioural Change	7.8
2	Recruitment and Assessment of Repairers and Front-desk Volunteers	7.6
3	Skills Transfer/Training	7.4
4=	Publicity	7.2
4=	Health and Safety	7.2
6=	Managing Expansion	6.8
6=	Engagement of Youth	6.8
8	Insurance	6.7
9=	Management Team	6.6
9=	Data Collection and Measurement	6.6
11	Portable Appliance Testing (PAT)	6.5
12	Building Relationships with other Repair Cafes	6.3
13=	Organisational Status	5.9
13=	Increasing Diversity of Repairers and Front-desk Volunteers	5.9
15	Engagement with Local Government	5.4
16	Income Generation	5.0
17	3D Printing	3.5

A large, dark, irregular ink blot with the text "CV-19" in the center. The blot is surrounded by a light, textured background with scattered dark specks.

CV-19





OPS &
PUTERS

MECHANICAL



FARNHAM
REPAIR CAFE
John Pearce





FARNHAM



REPAIR
CAFE

Farnham Repair Café

Next Farnham Repair Café - 10th June 2023 10.00 - 12.30

[Click here for more information](#)

Latest Repair Statistics

83

Events held

4,437

Visitors to FRC

1,979

Repairs completed

66

% Repair rate

5.6

Tonnes of Landfill diversion*

52.2

Tonnes of CO2e reduction

98

% Customer satisfaction

155,593

£ Saved by citizens

*This also assumes diversion from materials recycling.

Repair Café Carbon Calculator Results



[Link to Methodology used](#)



Quick Carbon Calculator Results

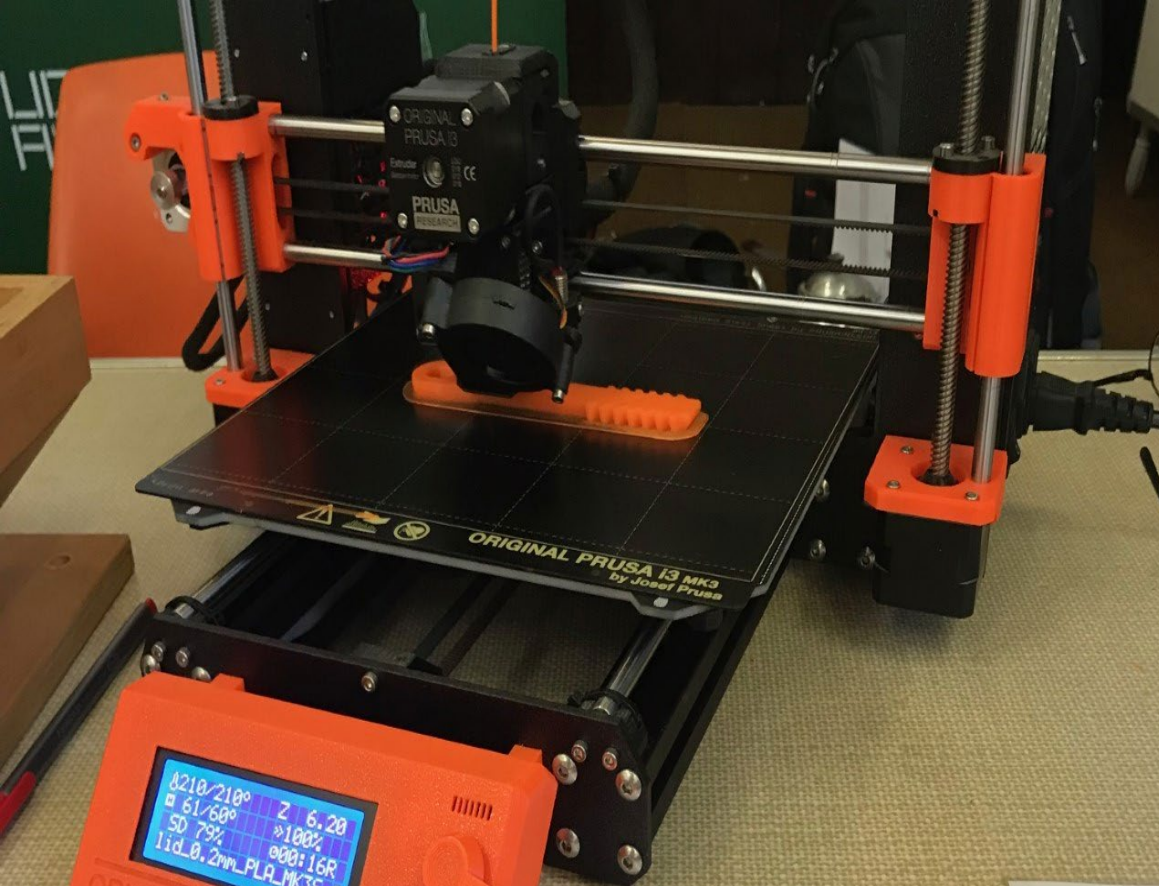
Emission saving (kg CO₂e): -799.0

Landfill & recyclables saving (kg): -85.0

Number of successful repairs (units est.): 24.3

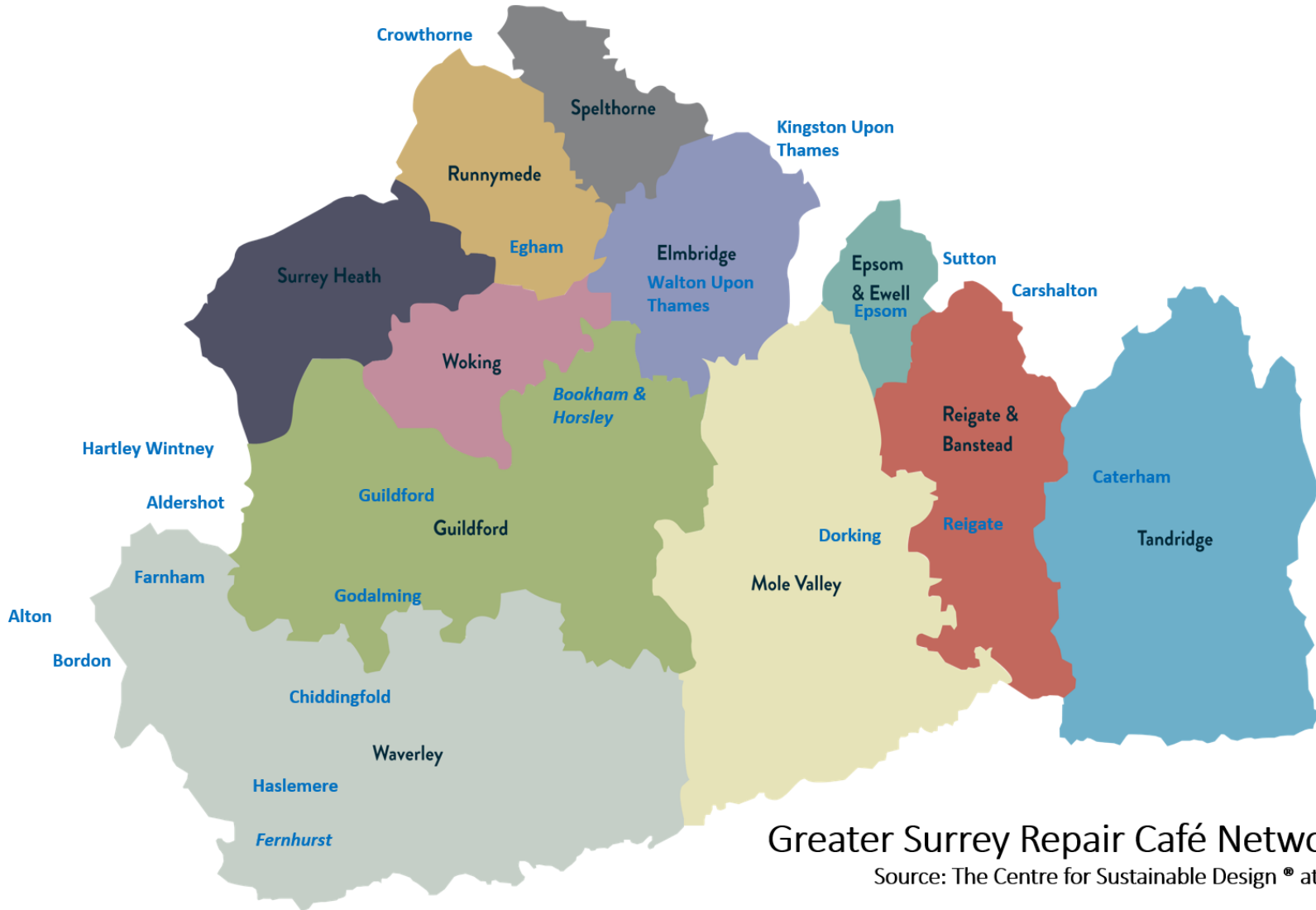
Your input of successful repair numbers used for the calculation:

Weight of successful repairs (kg): 85



Use the Render tool to save renderings to your gallery.





Greater Surrey Repair Café Network (GSRCN)

Source: The Centre for Sustainable Design[®] at UCA, MARCH 2023

NSYSU celebrates official establishment of Southern Taiwan Repair Café Alliance with international forum

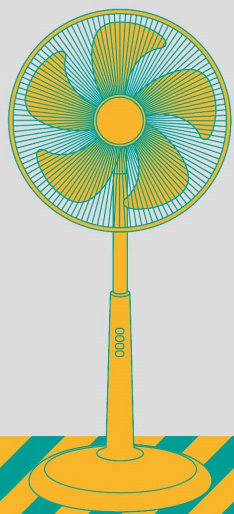
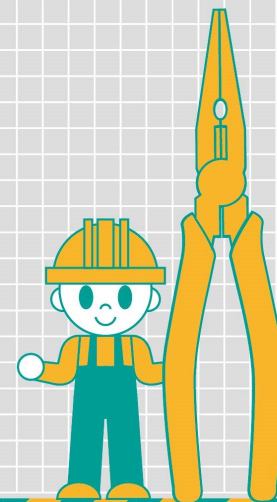
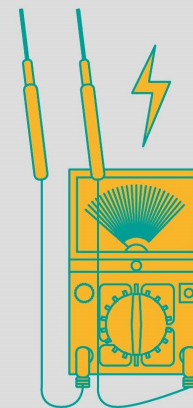




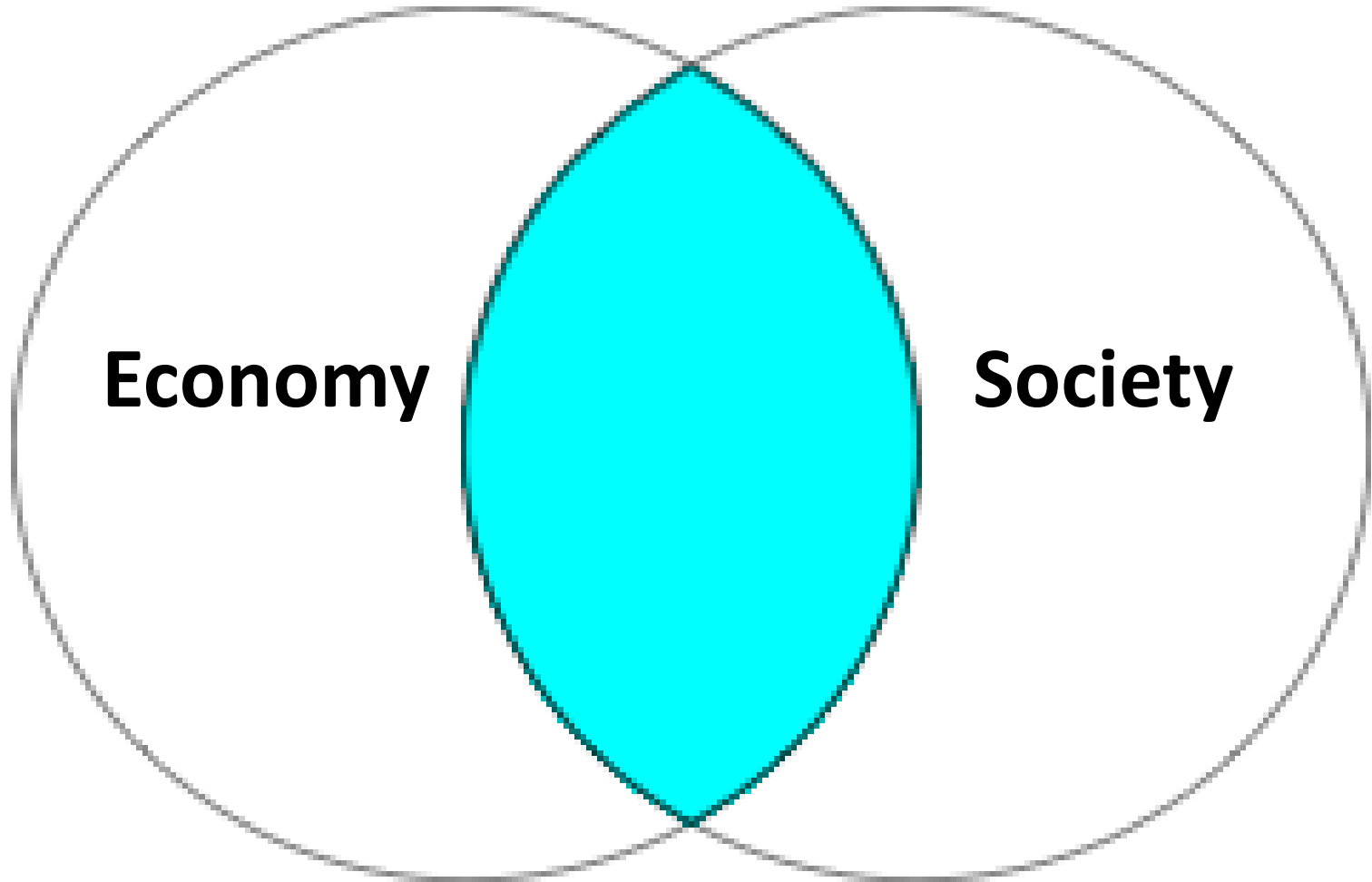
維修現場

維修，修復的不只是物件，
也修復了人與地球、人與人的關係

在社區大學維修課程、在農機師資培訓班，勞動技藝在維修達人與素人間切磋傳承，在農機與小家電維修巡迴活動中，維修空間匯聚了熱愛維修的達人志工，有維修需求的農民與市民，維修空間凝聚人情，創造互助、分享與包容的社會關係。



Circular Economy: Society v Economy







Farnham

A guide for living in Farnham in 2023/24

Three times gold medallist at RHS Britain in Bloom
Winner of multiple gold awards and category winners at South & South East in Bloom
Designated as England's first World Craft Town
Crowned Council of the Year by the National Association of Local Councils



Badshot Lea	Firgrove	Moor Park	The Bourne
Boundstone	Folly Hill	Rowledge	Upper Hale
Compton	Hale	Runfold	Weybourne
Dippenhall	Heath End	Shorth Heath	Wrecclisham



Farnham Repair Café

Farnham Repair Café meets once a month and offers a place for local people to get free advice and assistance on repairing a wide range of household items. The types of items which have been brought to the café for repair include clothing needing a new zipper, bicycles with sticky gears, chairs with broken legs, lamps with damaged cables and clocks that no longer keep time.

When and where is the Café

The Café is run by volunteers. It operates from 10am to 1pm on the second Saturday of the month at the Spire Church in South Street Farnham.

Is there a charge for repairs?

The Café makes no charge for looking at or attempting to repair the item. The owner of the item will need to pay for any spare parts or materials that might be needed.

If you wish, you may make a donation towards the café's running costs.

How to volunteer

If you would like to volunteer at the Café and help with booking in repairs at the check-in desk or becoming a repairer, please do visit the café and speak with one of the trustees.

Further information

Visit www.frc.cfsd.org.uk



Back on track

Mark and his family used to spend their summer holidays visiting his Granddad in Bournemouth. During one holiday in 1962, they visited a summer church fete. Mark entered the raffle and to his delight won a Hornby Train Set consisting of a Triang R52 Jinty class tank locomotive and a Royal Mail carriage set. This was Mark's first electric train set and over the years, extra trains, track and carriages were added.

The arrival of a grandson and a move to Farnham has seen Mark's interest in his boyhood train set reignited.

After being stored in various lofts for many years, the trains were in need of some attention. Thanks to the experience and expertise of the team at the Repair Café, the trains are now running smoothly and Mark plans to set up a permanent track in the loft where it can be used and enjoyed again by himself and his grandson.

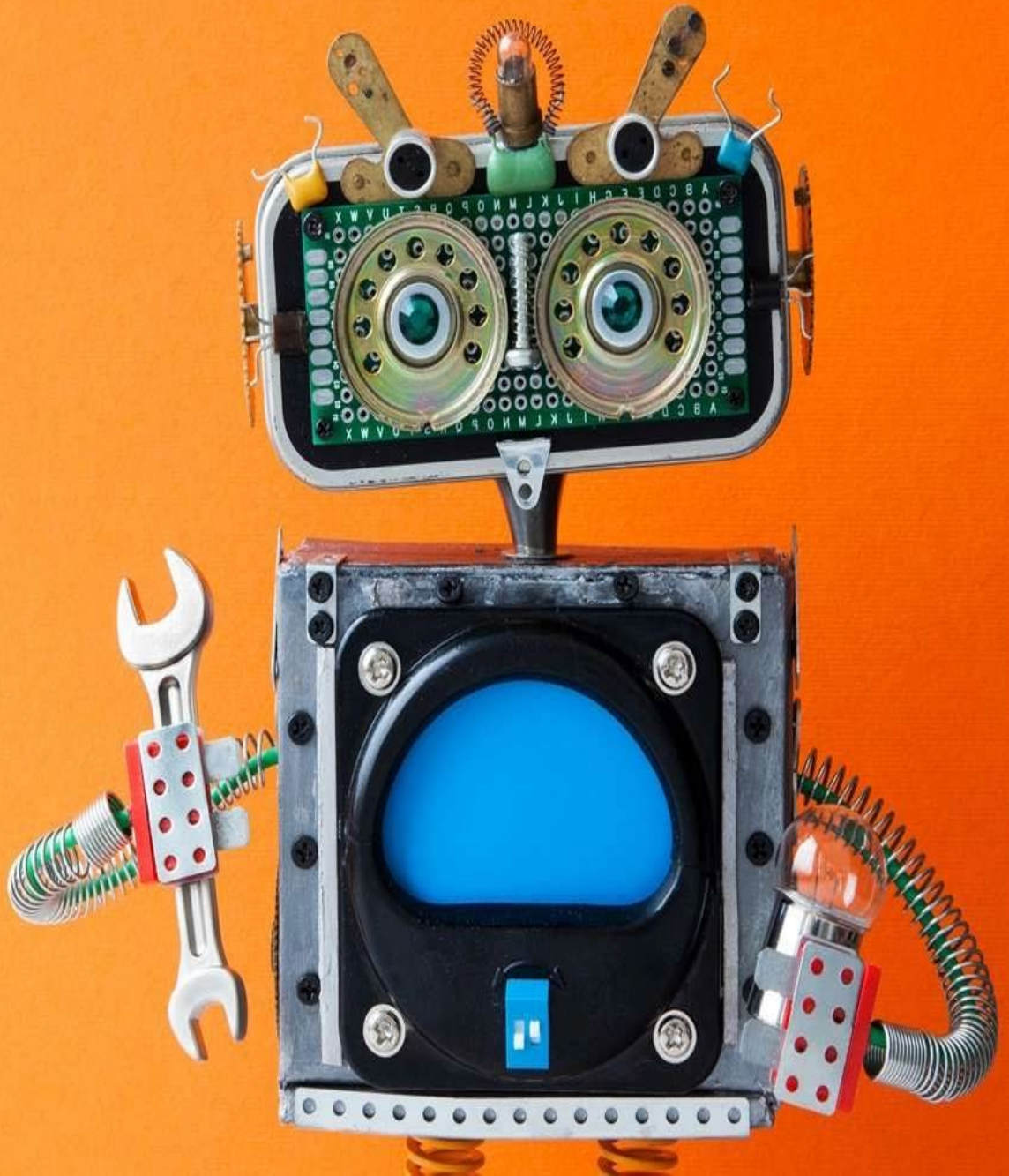


**2nd Repair Café
Conference**

RCIF

7th July 2023

Via Zoom





**3Rs: Reuse, Repair, Refurbishment and Resale
Report on Cricket Gear**

30th June 2023 10-11

**Joanna Czutkowna and Martin Charter
The Centre for Sustainable Design*, Business School for the Creative Industries,
University for the Creative Arts**



CREATE

YOUR

FUTURE

Contact Details

Professor Martin Charter

Director

The Centre for Sustainable Design ®

University for the Creative Arts

Tel: 00 44 (0)1252 892772

Fax: 00 44 (0)1252 892747

Email: mcharter@ucreative.ac.uk

Web: www.cfds.org.uk